

Lake of Two Mountains



Appendix 1 : Land use designations

This map is an integral part of the Village of Senneville
Master Plan By-Law

Land uses

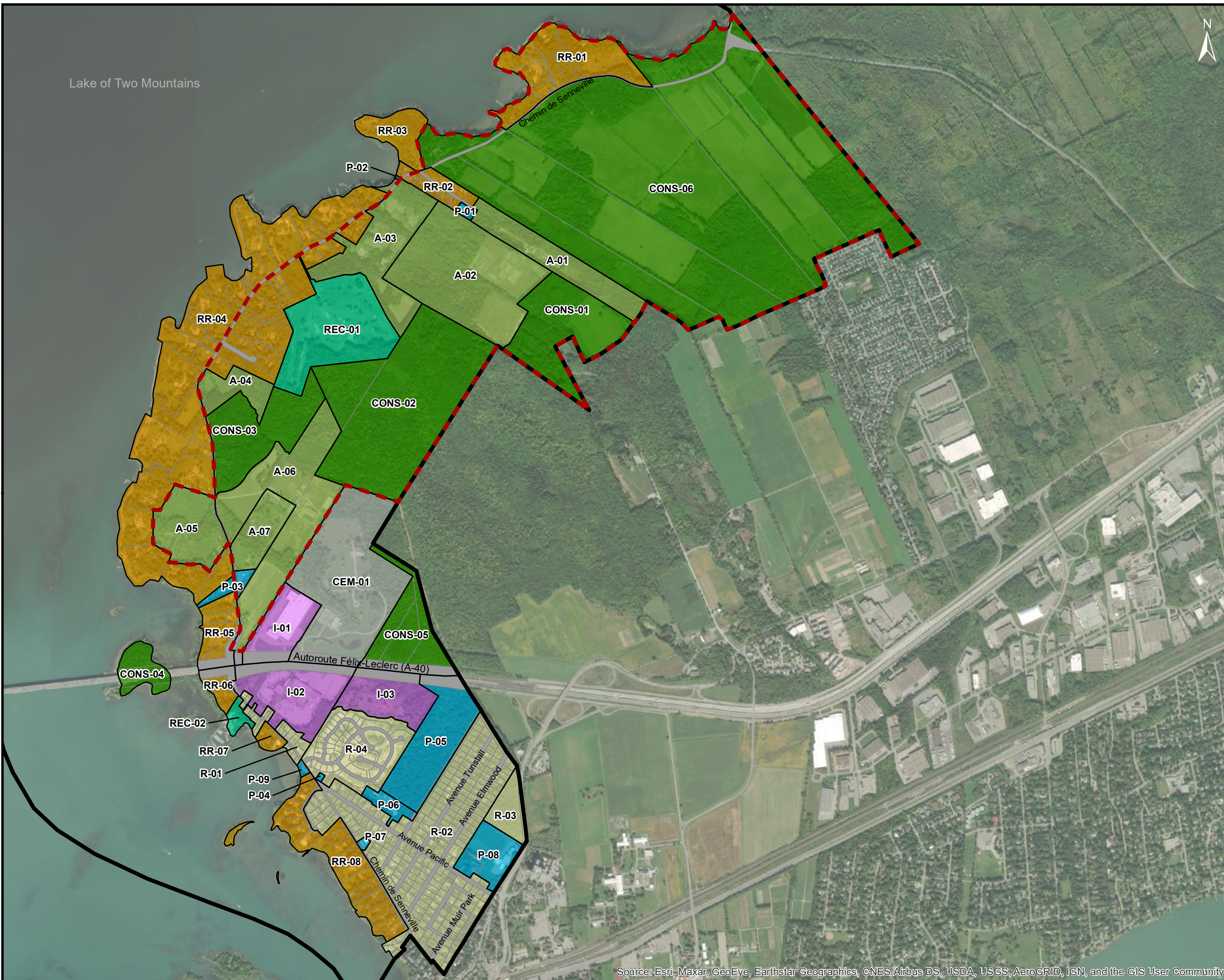
- Agricultural (A)
- Cemetery (CEM)
- Conservation (CONS)
- Industrial (I)
- Public (P)
- Recreational (REC)
- Residential (R)
- Rural residential (RR)
- Limits of the agricultural zone covered by Act respecting the preservation of agricultural land and agricultural activities
- Limit of lots
- Limit of the Village Senneville



Modifications of the Master Plan

By-Law no	Coming in force
448-7	February 17, 2021

Up to date : 12 mars 2020



Source: Esri, Maxar, GeoEye, Earthstar Geographics, CNES/Airbus DS, USDA, USGS, AeroGRID, IGN, and the GIS User Community